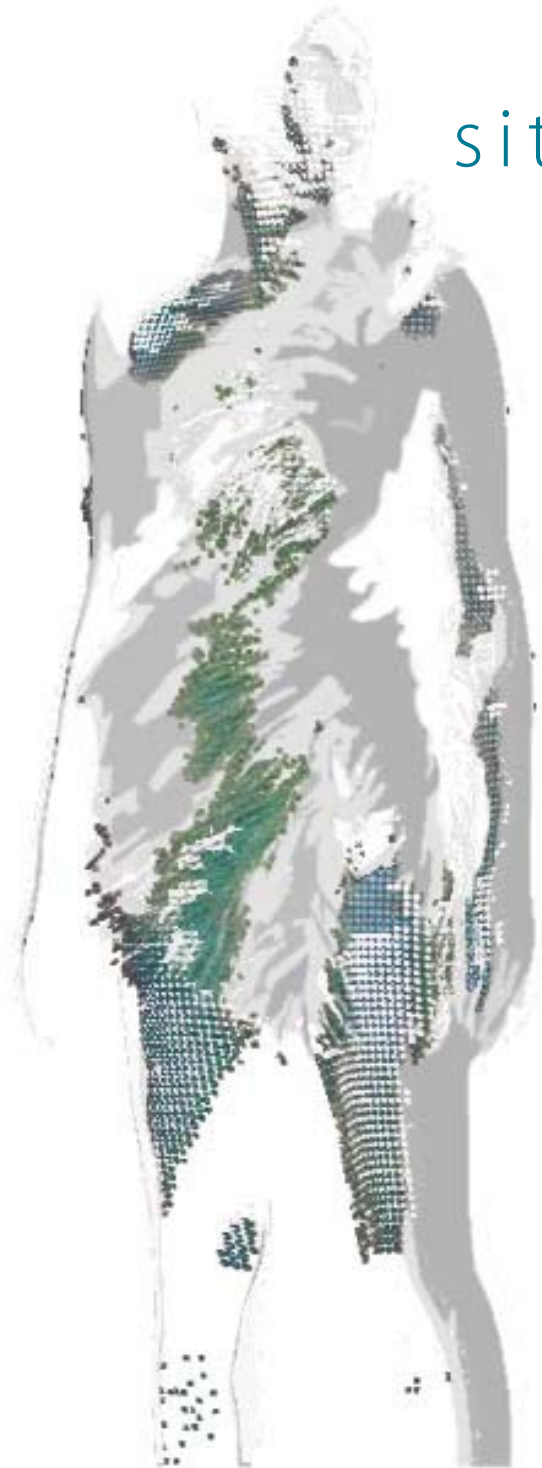


ALICIA MARVÁN artist + designer

site-specific kinetic garments

A new media series of hi-tech performative/transformational wearable sculptures created for specific locations and communities worldwide. The garments are constructed with local materials and the latest technology in scientific couture (interactive interfaces, smart textiles, motion and temperature sensors, etc), in order to react, influence and document their wearers. The unique designs instigate specific body movements and activities inspired by the site they were created for, remaining on location to be worn/experienced by the general public.



PROTOTYPES

The series' concept was developed in Summer of 2008, while in residency at Earthdance, Massachusetts. Three garment prototypes were created for that site, titled **pupa**, **spine** and **chrysalis**, each corresponding to a specific location and time of day. The project is currently at a pre-production research phase, so the prototypes did not incorporate the technological aspect of the project, but illustrate its conceptual framework. Following is a description of each.

pupa

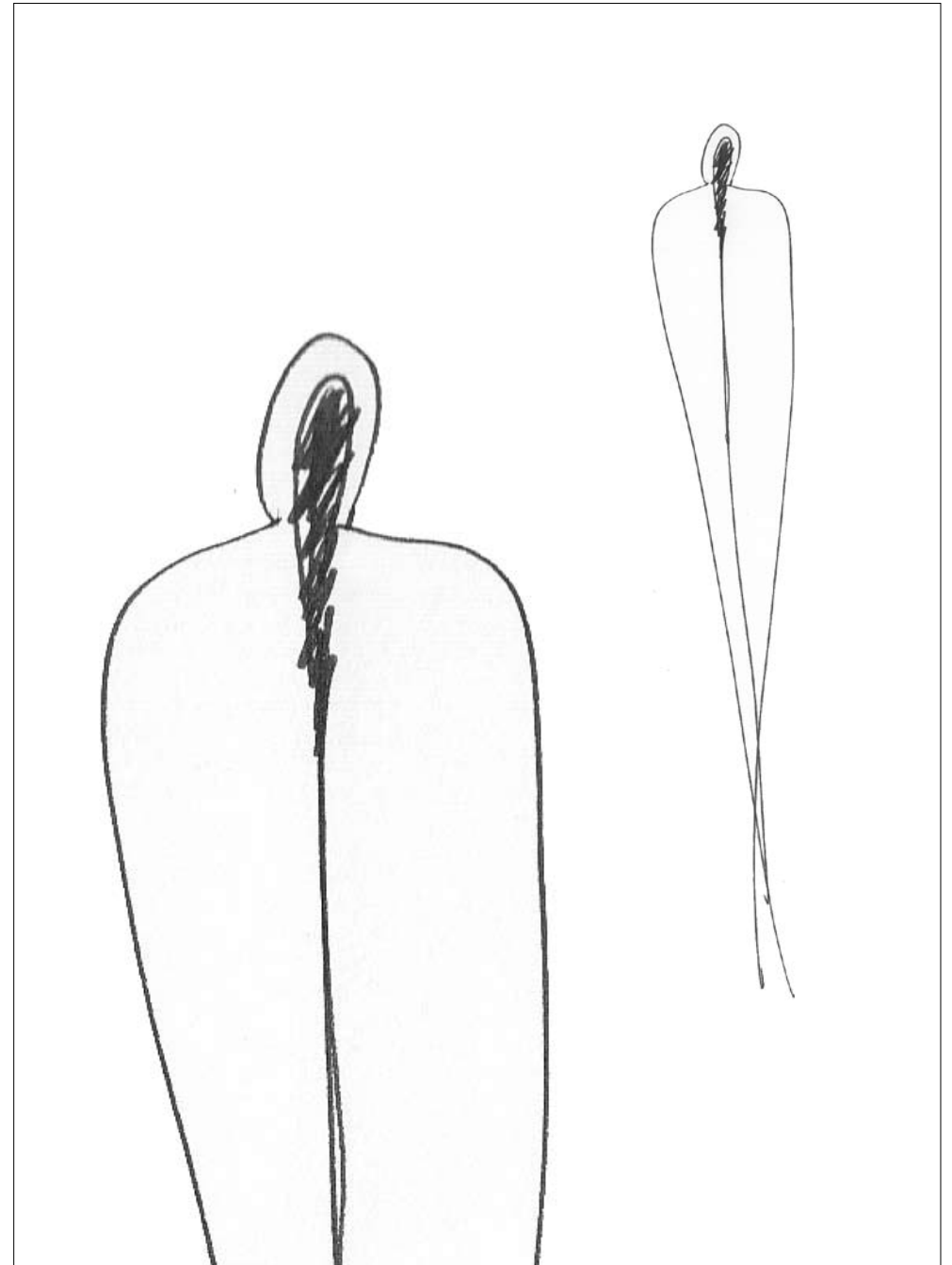
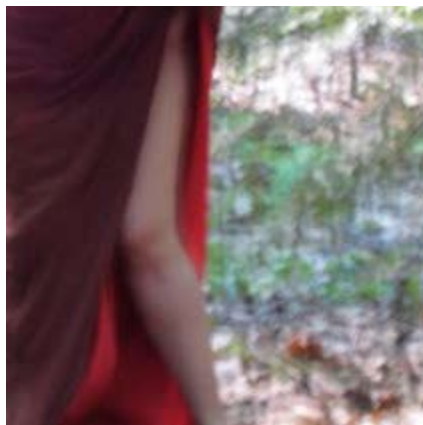
LOCATION
forest

TIME
7:00 - 8:00 am

CONSTRUCTION
cocoon-like structure
with zipper down the front

MATERIALS
soft red cotton fleece inside
thick brown linen outer shield

CONCEPT
the juxtaposition of shapes, textures
and colors supports the 'waking' hours
of the body and forest, allowing a
gradual and comfortable transition
from rest to action



spine

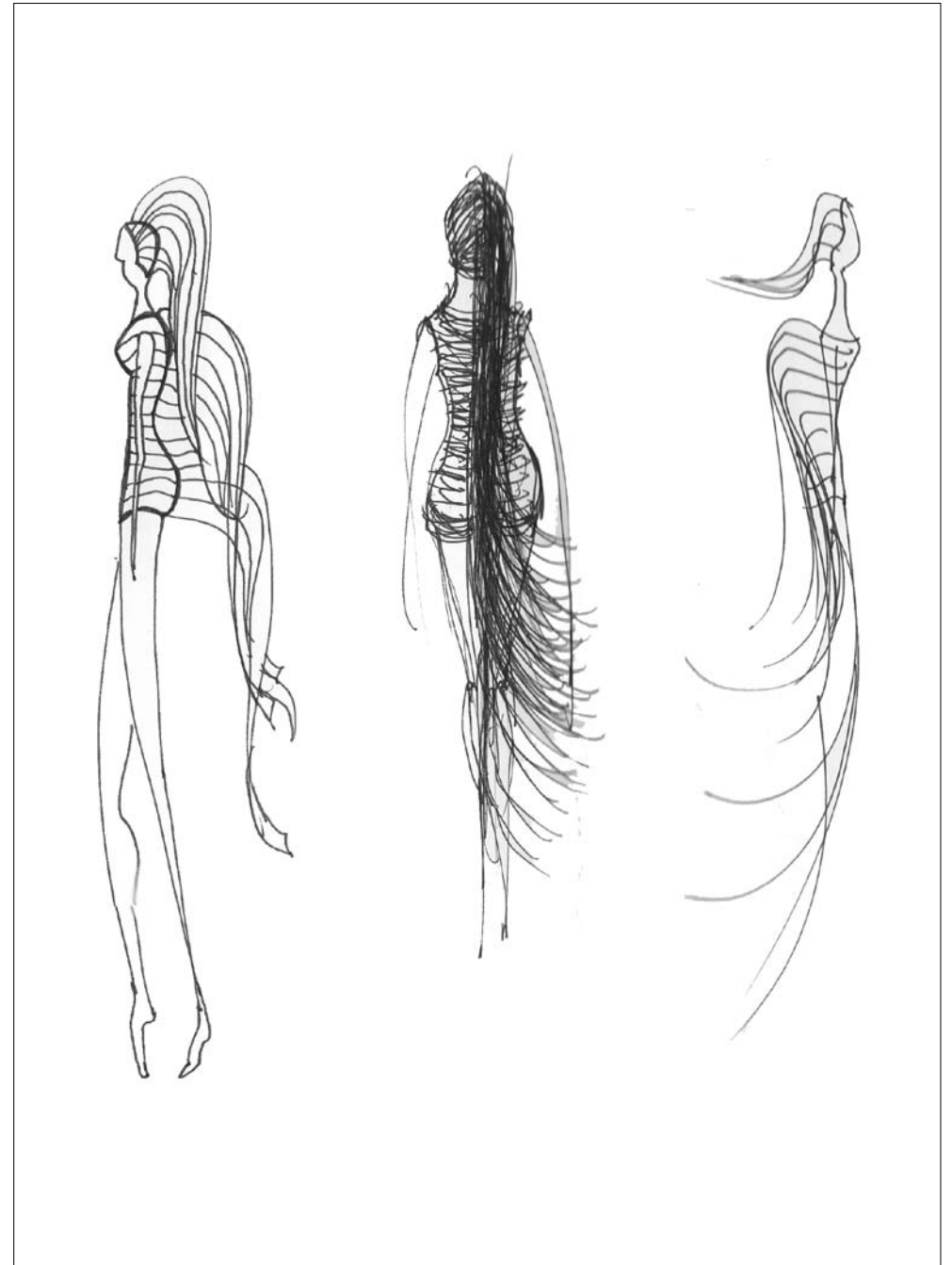
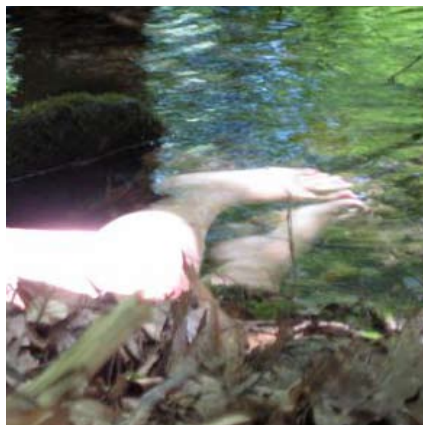
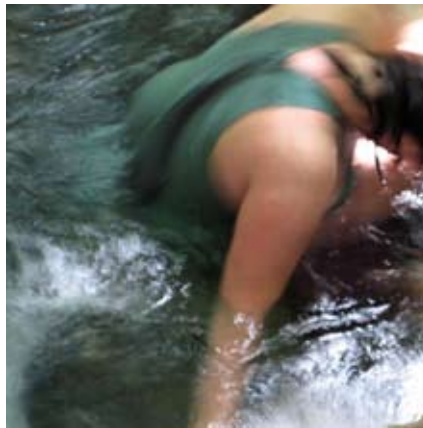
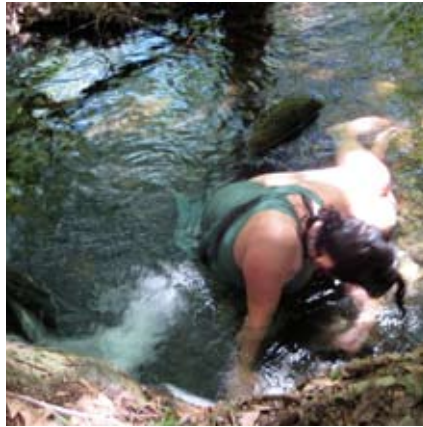
LOCATION
stream

TIME
12:00 - 1:00 pm

CONSTRUCTION
bathing suit

MATERIALS
stretchy cotton

CONCEPT
the hanging strips of fabric
down the back of the spine
accentuate the space in between
vertebrae, which in turn facilitates
ondulating and spiral movements,
particularly inside water



chrysalis

LOCATION

forest path

TIME

9:00 - 10:00 pm

CONSTRUCTION

ample gown with lights inside

MATERIALS

sheer fabric
battery-operated lights

CONCEPT

designed to be worn in a forest path at night, the garment is illuminated from below and within, so that passerby's barely distinguish it from the distance but are surprised by it when close

